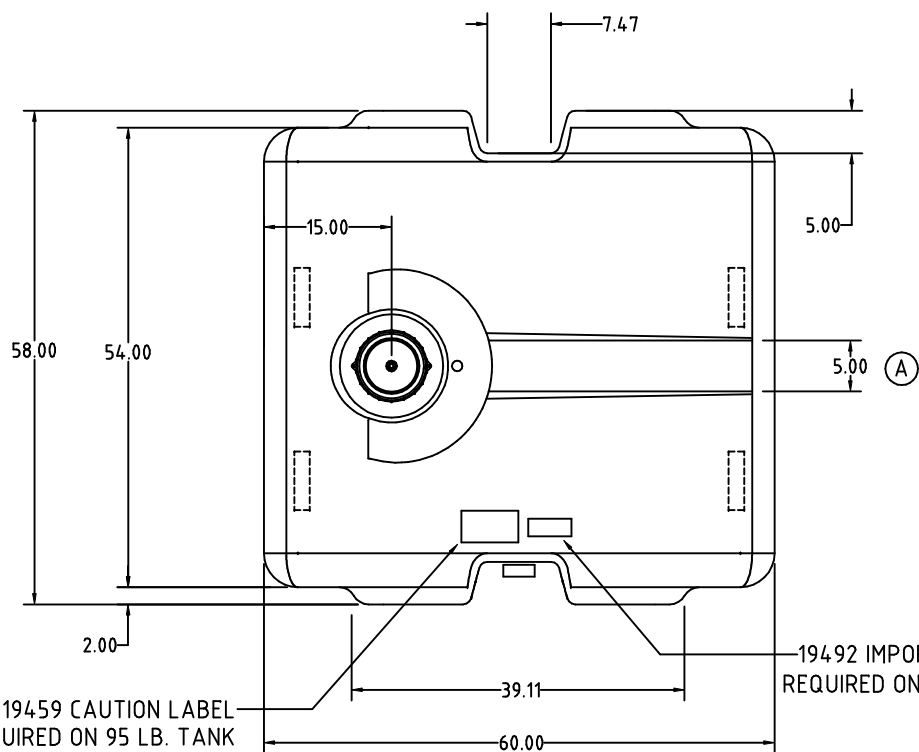


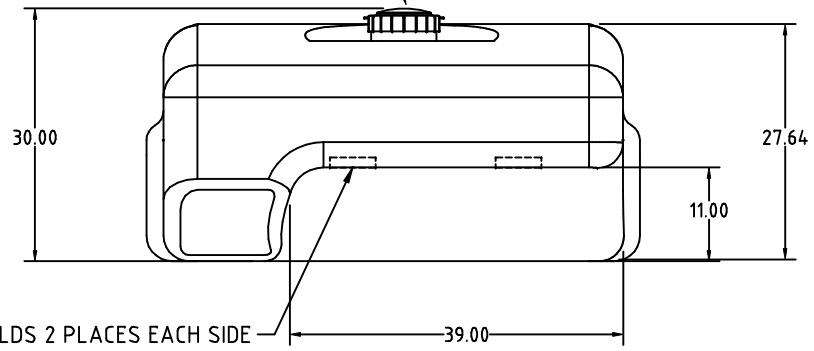
Copyright. All information furnished within this document, electronic file or design correspondence is the property of Den Hartog industries, Inc. and shall not be used, disclosed to others or copied without the expressed written consent of Den Hartog Industries, Inc.



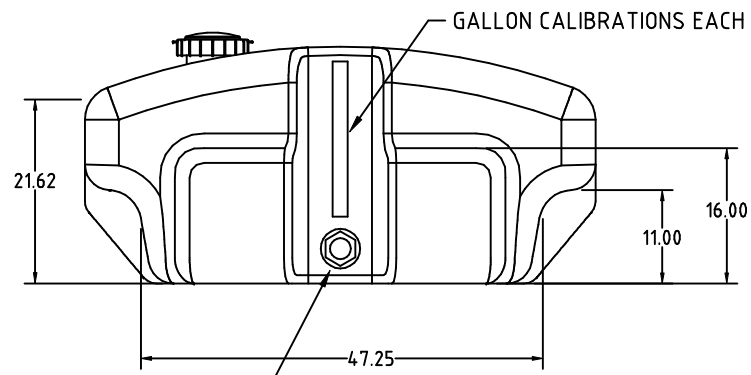
②
12414 7" VENTED LID ASSEMBLY AND 12460 LANYARD

19459 CAUTION LABEL REQUIRED ON 95 LB. TANK

19492 IMPORTANT LABEL REQUIRED ON ALL 305 TANKS




HAND HOLDS 2 PLACES EACH SIDE



GALLON CALIBRATIONS EACH END OF TANK

STANDARD FITTING IS 2" WITH SYPHON TUBE

C	ADDED 120LB. FOR 1.7 S.G. MODEL	6/7/10	CCN2032	DRAWN / DATE REH 12/29/05	MATERIAL 10420 3 MELT
B	CHANGED TO 7" LID	6/22/07	CCN1362	APPRD. / DATE DHJ 12/29/05	
A	ADDED TOP RIB	8/7/06			
REV	DESCRIPTION	BY / DATE	CCN		
ALL DIMENSIONS ARE IN DECIMAL INCHES TOLERANCES UNLESS OTHERWISE SPECIFIED		THIRD ANGLE PROJECTION ANSI 14.5M		SHOT WEIGHT: 95 LB. / 1.0 S.G.	NOTES: 1. NOM. WALL = .235 @ 95LB 2. 1.7 S.G. = .295 WALL @120LB. Ⓢ
POLYETHYLENE ±1% @ 68° F		METAL DECIMAL ± .125" FRACTION ± 1/4" ANGLE ± 1°		SHIPPING WEIGHT: 97 LB. / 1.0 S.G.	
				FINISH:	



Den Hartog

INDUSTRIES, INC.
Ace Roto-Mold Injection Molding Blow Molding Sowjoy
4010 HOSPERS DRIVE S. BOX 425, HOSPERS, IOWA 51238-0425

DESCRIPTION		305 GALLON PICKUP TANK	
SCALE	N.S.	PART NO.	PU0305-60