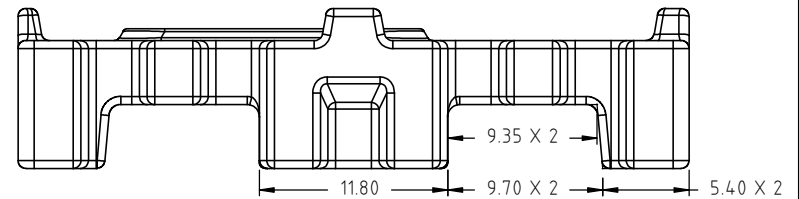
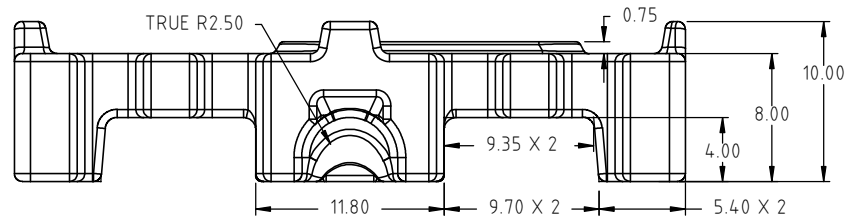
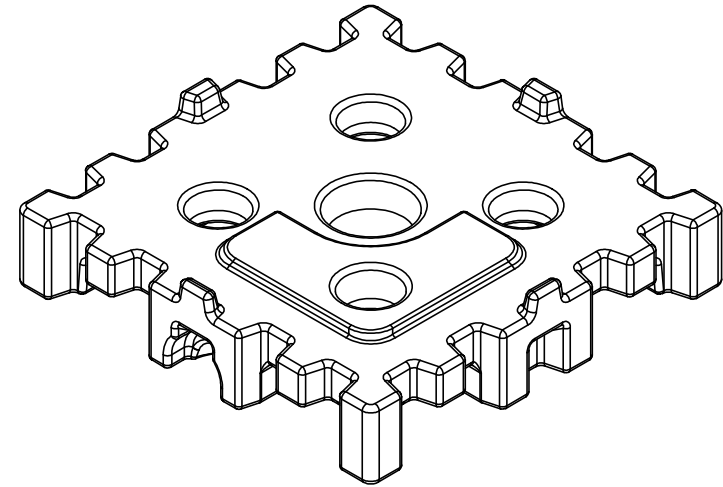
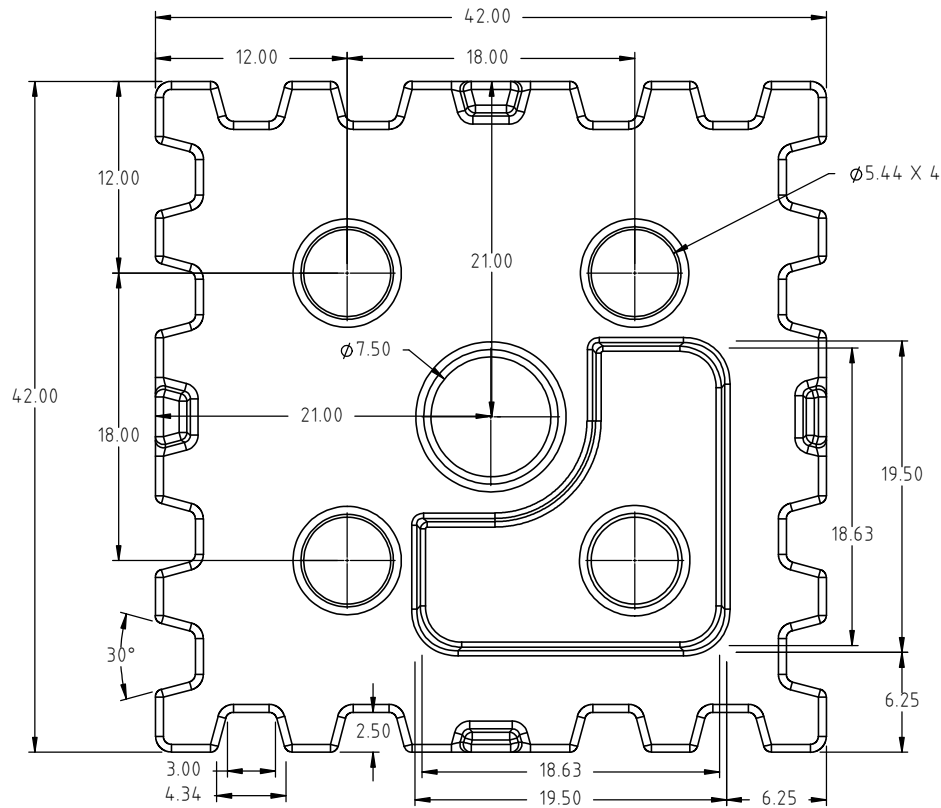


Copyright. All information furnished within this document, electronic file or design correspondence is the property of Den Hartog industries, Inc. and shall not be used, disclosed to others or copied without the expressed written consent of Den Hartog Industries, Inc.



				DRAWN / DATE ADH 7/12/11	MATERIAL 11017
				APPRD. / DATE REH 7/13/11	
REV	DESCRIPTION	BY / DATE	CCN	SHOT WEIGHT: 55 LBS.	NOTES: NOM. WALL THICKNESS .0300
	ALL DIMENSIONS ARE IN DECIMAL INCHES TOLERANCES UNLESS OTHERWISE SPECIFIED			SHIPPING WEIGHT: 55 LBS.	
	<u>POLYETHYLENE</u>			FINISH:	
	METAL DECIMAL ± .125" FRACTION ± 1/4" ANGLE ± 1°				
		THIRD ANGLE PROJECTION ANSI 14.5M			



Den Hartog
INDUSTRIES, INC.

Acro Roto-Mold Injection Molding Blow Molding Sowjey

4010 HOSPERS DRIVE S. BOX 425, HOSPERS, IOWA 51238-0425

DESCRIPTION 42" TOTE ADAPTOR	
SCALE N.S.	PART NO. 19508